



International Stroke Genetics Consortium

16th Workshop

November 6-7, 2014

Paris, France



16th Workshop of the International Stroke Genetics Consortium

6-7 November 2014, Paris,
France

Host: Dr. Stéphanie Debette
Co-Host: Dr. Guillaume Paré



CONFERENCE VENUE

The meeting will be held at the Maison de
l'Amérique Latine
217 Boulevard Saint Germain, 75007 Paris



The Maison de l'Amérique latine occupies two
different mansions :

- "The Hotel de Varengeville" built in 1704 by the
architect Jacques Gabriel V.
- "The Hotel Amelot de Gournay" built in 1712 by
the architect Boffrand

<http://mal217.org/english/>



REGISTRATION

Conference, ~200 EUR

Thursday dinner, to be confirmed

Friday dinner, to be confirmed

For any question please contact
Sabrina Schilling: sabrina.schilling@inserm.fr
Magali Garcia: registration@adefra.fr

PRACTICAL INFORMATION & ACCOMMODATION

Practical information and accommodation details
will be available soon.

If you wish to benefit from preferential rates on
your plane tickets, please use the following link
and code:



The best price for your air ticket
Get the best price for your flight with Air France
and KLM Global Meetings

Event ID Code to keep for the booking: **22298AF**

More details: [www.airfranceklm-
globalmeetings.com/?eid=22298AF](http://www.airfranceklm-globalmeetings.com/?eid=22298AF)

THURSDAY PROGRAM

- 9:00 Conference begins
- 10:30 Break
- 11:00 Conference
- 12:45 Lunch
- 14:00 Conference
- 16:00 Break
- 16:30 Conference
- 18:00 Visit of the Musée d'Orsay and dinner in the Museum Restaurant



FRIDAY PROGRAM

- 9:00 Conference begins
- 10:15 Break
- 10:45 Conference
- 12:30 Lunch
- 13:15 Conference
- 14:45 Break
- 15:15 Conference
- 18:00 Visit and dinner



POTENTIAL WEEKEND ACTIVITIES

Guided Tours & Events

Jacquemart-André Museum

Les Passages Couverts

Palais-Royal Gardens

Opera



Free time



Invited speakers



Elisabeth Tournier-Lasserre

Prof. of Genetics

Inserm U1161, Paris 7 Univ.

Genetics of monogenic cerebrovascular disease:
CADASIL, cavernomas, Moya-Moya...

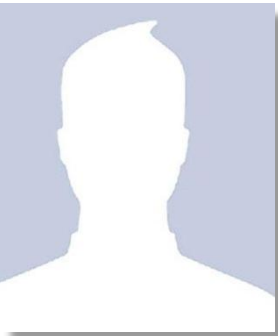


Philippe Amouyel

Prof. of Epidemiology

Inserm U744, Pasteur Institute, Lille

Genetics of late onset Alzheimer's Disease
Epidemiology of cardiovascular disease...



To be determined

Scientific Program

- Will be discussed within scientific committee and with working group representatives
- Choose a few “themes” to spur discussion, e.g. towards
 - Exploring pleiotropy in small vessel disease
 - Optimizing rare variant analyses in stroke
 - Facilitating translational studies
 - Enhancing genetic studies across ethnic groups
 - New imaging phenotypes
- Any ideas from the audience are welcome
 - Please e-mail Guillaume and Stéphanie!

To relax after a long day...



Thursday dinner at Musée d'Orsay

2 blocks from Conference Venue

Impressionist paintings mainly

Located in former train station

Guided tour followed by

Dinner in Museum Restaurant



Friday dinner

Restaurant Chez Françoise

Typical French dinner

Visit of historical site to be confirmed



Saturday activities

□ Guided tour at one of the following site



Musée Jacquemart-André

Private art collection from a wealthy banker and his wife, displayed in their magnificent mansion built in 1869

Les Passages Couverts

Passages covered with a glass roof and lined with shops, belong to 19th century heritage; up to Palais Royal Gardens



Musée du Louvre

Guided Tour of the masterpieces of the museum

Saturday activities

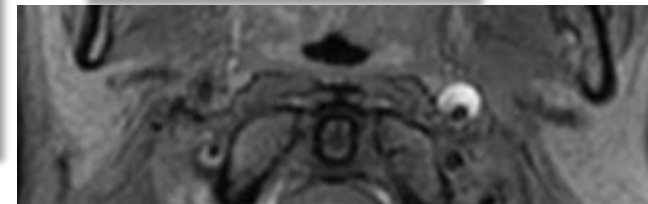
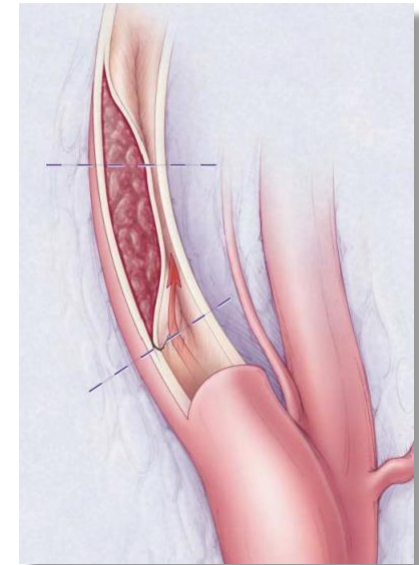
- Two opera options on Saturday evening
 - Die Entführung aus dem Serail (Mozart)
at the Opéra Garnier
 - Tosca (Puccini)
at the Opéra Bastille



Reservations begin on August 28th, and should be made very soon after that date

If you are also interested in cervical artery dissections...

Two-day symposium on cervical artery dissections
November 4th-5th at the Singer-Polignac Foundation, Paris
Co-organized with Prof. Marie-Germaine Bousser



Contacts

- For general inquiries
 - ✓ Sabrina Schilling:
sabrina.schilling@inserm.fr
 - ✓ Stéphanie Debette
stephanie.debette@lrb.aphp.fr
sdebette@bu.edu

- For registration and hotel reservations
 - ✓ Magali Garcia:
registration@adera.fr